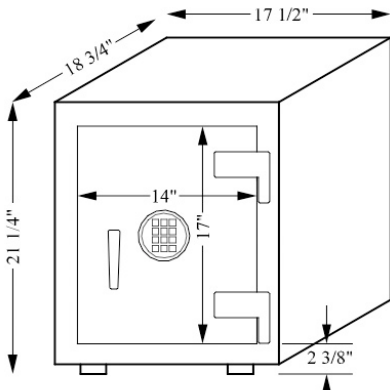


## TOPAZ - LUXURY JEWELRY SAFE

### SPECIFICATIONS AND DRAWINGS

PROUDLY  
MADE IN THE USA

A unique design that combines the convenience of a luxury jewelry chest, the security of a burglary safe and the peace of mind achieved with a fire safe. The industry's first UL listed, fire rated burglary safe. Over 35,000 units delivered worldwide to satisfied customers.



Front View

#### Specifications:

Exterior Dimensions: 21-1/4" H x 17-1/2" W x 20-3/4" D

Interior Dimensions: 15" H x 12" W x 12-3/4" D

Clear Door Opening: 15" H x 12" W

Cubic Foot Capacity: 1.3

Weight: 315 lb. (High Security Weight: approx. 525 lb.)

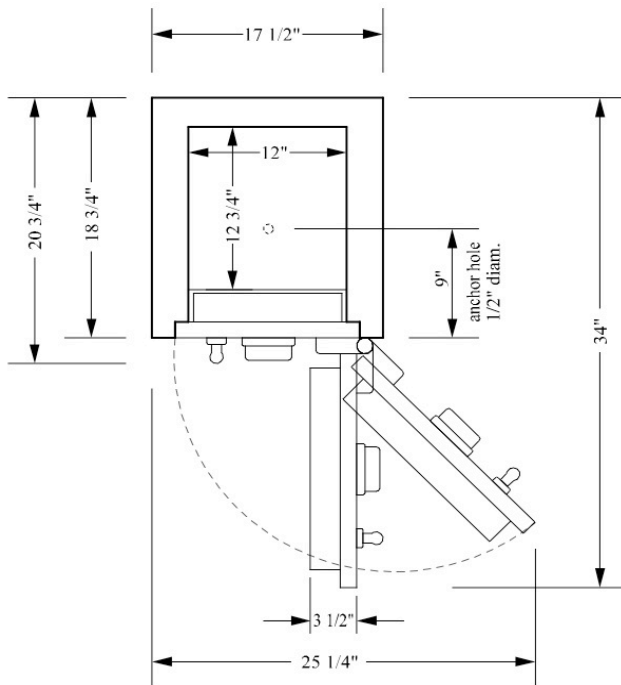
Standard 2 Drawer Configuration: approx. 7" vertical space remaining

Standard 3 Drawer Configuration: approx. 4" vertical space remaining

Standard 5 Drawer Configuration: fills the safe

#### UL Certified:

During Underwriters Laboratories grueling testing procedures, this safe earned the Class 350° F, One Hour Fire Label - tested at 1,700° F - and the (RSC) Residential Security Container Burglary Label.



Top View

#### Door:

- 3-1/2" thick, includes a 1/2" steel plate with a unique proprietary fire and burglary resistant material.
- Right hinge is standard, left hinge is a no-cost option.
- Dual seal design utilizes a silicone foam seal with a heat-expanding **intumescent seal**.\*

#### Body:

- 2-5/8" thick, consisting of 1/8" outer **and** inner steel plates creating a burglary resistant structure enclosing a unique proprietary fire resistant material.
- Three massive 1" diameter solid steel chrome- or brass-plated locking bolts.
- A full length dead bar locks deep into the body preventing door removal during a forced entry attempt.
- UL listed Type 1 digital lock with spring-loaded auxiliary relocking device.
- 1/4" heavy duty carburized hard plate.
- Heavy duty steel hinges provide easy, smooth door operation.
- One recessed anchor hole provided to securely anchor safe.

#### Warranty:

Lifetime fire replacement and one year parts and labor.

#### \* Intumescent Door Seal:

When the intumescent seal is exposed to temps above 250°F it expands to 8 times its original thickness, thus providing a strong positive seal between door and body preventing heat influx.

\* Safe door needs to open more than 90° as illustrated to fully extend drawers.

\* Add 1" to ALL exterior dimensions for more reliable installation.